

On Target!



SPECIAL POINTS OF INTEREST:

- **Guess who's had a birthday?**
- **Guess who's birthday's in May?**
- **Wayne Meyer ties the knot**
- **Amanda Fourie has a baby**

INSIDE THIS ISSUE:

Provident Fund FAQ's 2

Safety: Your first Priority 2

Wayne Cook shares his Liebherr experiences 3

Going North: Our Gauteng Branch takes flight *by Matthew Jack*

Target Cranes has launched its national expansion with the opening of our Gauteng branch based in Wadeville in March this year. The opening of the new branch has been extremely well received. All of the cranes are in constant use on high profile sites such as Bombela Gauteng and Sandton Square. This is despite a delay in the installation of phone lines which would normally be an absolute disaster to any other business.

The current fleet consists of 10 cranes including a new LTM1095s, 2 new LTM 1055s, 2 new LTM 1040s and 2 new LTM 1030s. There are a number of Tadanos in addition to a few cranes from our Cape Town branch including the LTM 1130. The Gauteng branch will have in excess of 20 cranes by the end of May rapidly making Target Cranes Gauteng a formidable national crane hire operator. We are also expecting the delivery of the LG1550 as well as a number of significant size cranes in the next couple of months.

The staffing of the branch consists of experienced individuals with Gauteng experience in addition to the transfer of various employees from Cape Town. We would like to welcome all the new employees to Target Cranes and encourage the staff transferred from Cape Town to maintain the Target Cranes culture of pride and excellence from Cape Town into the new branch.

David Heyneke joins us from Marlboro Cranes as our Sales Manager. Richard Holtzhausen has transferred from Cape Town to operate the LTM1400 and has been instrumental in maintaining the Target Cranes culture

in Johannesburg. Wayne Cook is due to transfer to Johannesburg as the operator of the massive LG1550 following his visit and training on the new crane at Liebherr in Germany. Natasha Holtzhausen has joined us as Administration Manager following a similar role at Colliers in Cape Town. Karen Cook will also be joining us in the Johannesburg debtors departments after 15 years at Standard Bank. Debbie Heyneke is our new Operations Controller, supporting David. A number of new crane operators have also joined the Gauteng branch; Patrick Cindi, Johan de Lange, Maxwell Luvuno, Siphila Madikizela, Elias Mahlangu, Lesly Makhanya, Dirk Motsoso, Benjamin Msimanga, Lucky Ndinisa, Johnson Nkosi, Simon Mofokeng. Primrose Shabangu has joined us as tea lady and we are hopeful that she will take on a more office type function shortly. Bheki Mthethwa is our driver and Simphiwe Msimang has joined us as our yard assistant.

We are also due to publicly announce the arrival of our new Technical Manager later in May who will be responsible for our larger fleet of cranes.

To give all a better understanding of the size of the expansion of the Gauteng operation, we are to shortly start the building of our new offices and yard in Alberton with a yard capacity in excess of 10,000m².

The resultant expansion will result in many of the Cape Town operators being given the opportunity to move to Johannesburg and allow for promotions to more senior positions and involvement in training programmes.

The Liebherr Experience: a chat with Wayne Cook

With the purchase of Liebherr's LG 1550, they also invited two of our operators to go over and train on the machine at their premises in Germany. The training was for a two-week period starting at the end of March 2008, while Europe's still in the grip of snowy winter conditions with negative temperatures being the norm. One of the operators was Wayne Cook

and he shares some of his experiences with us.

Q: As an operator, what was your impression of our new crane?

A: At first I was disappointed by the design because its old in comparison to the LTM 1400 but when you see it in operation, disappointment fades fast! You're also intimidated by the size of the machine, with

counter-weights of 400 tons, a maximum boom length of 160m and its ability to pick up 27 tons at 100m.

Q: What features distinguishes it from any other crane that you have operated?

A: It doesn't have a telescopic boom, but a lattice boom driven by cable and not hydraulics, which makes operation a lot smoother and the lattice boom is much stronger.

Provident Fund FAQ's by Mitch Tunnicliffe

Gadija Nakidien has asked me to put a few "Frequently asked questions" in the news letter to help you to have a better understanding of how your Provident Fund Works. I have selected the most common questions and hope that you find this helpful.

1) What is the difference between a provident Fund and a Pension Fund?

The biggest difference is that upon retirement, a Pension fund pays out regular income to the pensioner whilst a Provident fund pays out a lump sum. In both cases, the joint contributions of the employer and the employees are invested to build up assets in advance of them becoming due.

2) How is my money invested?

All of your contribution is invested into the Life Stage Portfolio. This is made up of a combi-

nation of funds which provide Growth, Consolidation and Preservation. The combination will depend on your age. A younger person will have a greater exposure to the Growth Stage whilst an older person will be more geared to Preservation. This is automatically adjusted according to your age. The company also contributes to this fund on your behalf as well as paying all the costs associated with the risk benefits and management fees.

3) How do I join the fund?

Many of you will have already completed the acceptance forms and have already joined the fund. For anyone who was a permanent employee of Target Cranes on March 1 2008 who has not yet joined, they have until end Feb 2009 to join. If they do not join by then, they will have lost the opportunity.

Every new employee employed on a permanent basis after March

2008 will automatically become a member of the fund.

4) Who gets the life cover if I die?

You will be receiving a form called "Identification of Dependants and Nomination of Beneficiary"

The beneficiary nomination will be used by the trustees to help to determine the beneficiaries of the life cover. If the form is not available, Trustees of the fund have a responsibility to trace the legal dependant/s and are allowed 1 year to do this. If no dependants are found and no form or will is available, the benefits go to the member's estate or the Guardians Fund if no Inventory has been recorded. So, the form is important. Please complete it and return to Gadija.

6) What if I leave Target?

Upon resignation or retrenchment, you will be able to make a choice about where to invest your funds. You should speak to your Financial Adviser on this to make sure you make the correct choice.

The most common options are a)



Mitch Tunnicliffe,
Liberty Life
financial advisor
answers some
frequently asked
questions regarding
the Provident Fund

SAFETY: Your first Priority

We look at two possible causes of injury in mobile crane operations

There are many dangers that present itself in the operation of mobile cranes and it is essential that operators and assistants are constantly vigilant in ensuring their own, their colleagues and other site personnell's safety.

The two causes of injuries we are scrutinising are:

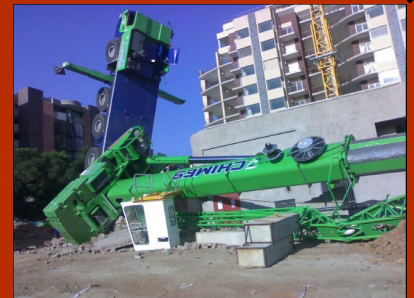
- A: mechanical failure and
- B: the crane overturning

You might be thinking, "mechanical failure is not my problem and is not my responsibility". Now I ask you: "Have you done a daily inspection before you started operating your crane this morning?" The 3 things that you are responsible for are: Firstly, **look** - can you see any damages; is there anything loose; has anything fallen off? Secondly, **listen**

- are there any unusual sounds when you run up the hoist, does the hook stop when it hits the upper limit switch or when its lowered to the ground; is the hoist working in all directions? Thirdly, **report** - have you brought it to the attention of management.

Remember, because the crane worked yesterday is no guarantee that it is in running order today.

If a crane has been **overloaded** in the stability area of its load chart, as seen in the photo above right, a crane can be overturned. Some of the contributing factors include failure to use or fully extend outriggers; failure to level the crane; poor ground conditions, high wind and rapid slewing. The accident above



Chimes crane overturned.

fortunately had not resulted in fatalities. Having felt movement on the crane, the operator had gotten out of the cab to advise the site foreman/supervisor that the ground conditions were unstable and watched their newly acquired machine plunge to destruction. The damages are estimated at approximately 10 million Rand and will be out of service for at least 12 months.

Sources: www.chimescranes.co.za; www.thefabricator.com

Provident Fund FAQ's *continued from Page 2*

Have the money transferred to a preservation fund b) Transfer the money to a retirement fund c) Transfer to a new employees fund d) Have the money paid out to you (less tax).

7) Do I need to register for tax?

It is advisable to be regis-

tered for tax. This will save time if you request a payment to yourself upon resignation. SARS are urging everyone to register for Tax.

8) Who looks after the fund?

Liberty Life administer the fund. With over 9,000 funds under administration and R44 Billion rand in retirement

Your personal contact within Liberty is Mitchell Tunnicliffe on 083 7728748 or 021 6742115 and you can call Mitch at anytime.



The whole trip was awesome - including 23 hours in transit, missing connecting flights, poor service in the French Airport, good service in Stuttgart Airport and one and a half hours of travelling by car to the factory, the cold, the wet, missing family, paying R30.00 for a 200ml coke etc., having a choice between hard, harder or the hardest rolls.

IT WAS BRILLIANT!

The Liebherr Experience

continued from Page 1

Q: I've heard someone say that this will be the biggest crane in the southern hemisphere, what does that imply in layman's terms?

A: This refers to the lift capacity i.e. 550 tons. You also get LTM550's but it doesn't have the same kind of reach. The LG 1550 has a stronger radius.

Q: Tell us about your training? What did it entail?

A: Everything!! I spent 90% of my time in the assembly process with detailed explanations of it every step as we went along. The other 10% of my time was spent in the office going through the manuals, just recapping what was demonstrated.

Q: What was the highlight of your training?

A: Lifting 310 tons as if it were a feather – there's absolutely no strain!! The crane has very little deflection.

Q: What were the biggest challenges during your training?

The cold!! Man, it was cold—with wind and snow! You're out in the cold all the time during your training, working right through temperatures as low as -3°C. Trying to get the feeling back into your fingers is a *!/?\$*.

Q: Were there any funny incidents that you would like to share?

The one day that the sun shines I left all my warm clothes at the hotel, what felt like a 'snow storm' to me hit us. To the Liebherr-folk it was just a light breeze!! They also found it funny that I referred to snow as the 'white stuff' and teased me everyday about whether I was enjoying the 'white stuff'!

Q: What are the Liebherr folk like?

People at Liebherr that I was directly in contact with were very warm and friendly but I think the language barrier distanced me from the others. I was treated like a king all the time I was there. Thank you, Liebherr.

Q: What did you enjoy most about Germany?

A: To me the training was an eye-opener that made me realise how limited my previous knowledge was, even though I thought I knew a lot. As a tourist, the church in Ulm, dating back to the 1800's was MAGNIFICENT! The architecture left me in absolute awe, everything was in carved stone.

The Mercedes Benz museum was also breathtaking! I tried out the Formula 1 simulator. I was physically thrown around and within 10 seconds I was exhausted. By the way, I drove the Monaco circuit, the slowest one, but also the one with the most turns.

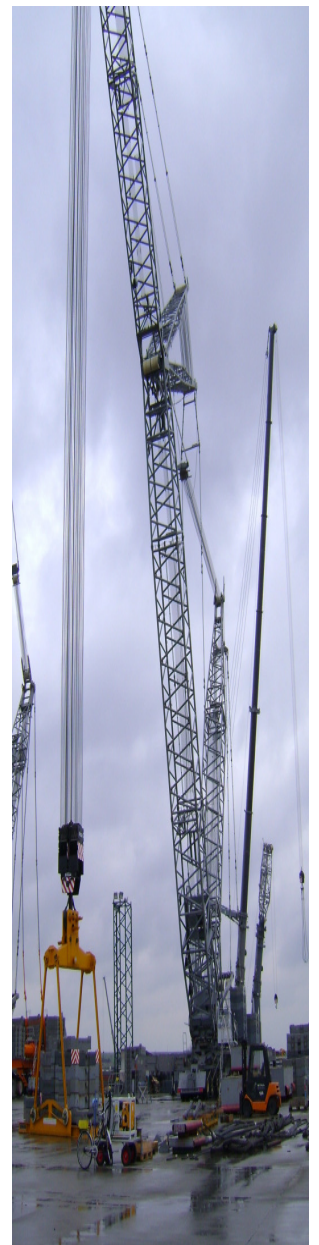
Q: What were the highlights of the trip for you?



A frozen Wayne Cook in the Liebherr yard. Where's your beanie!??



Final assembly of W-boom (luffer) still waiting for 11 ton hook block



LG 1550 preparing for load test of 310 tons



Target Cranes

Cape Town Offices:

P.O. Box 190, Kraaifontein, 7569

1 Van Eck Street, Bellville South, 7530

Johannesburg Offices:

264 Murray Road, Wadeville, 1428

National Tel.: 0861 535 535

Cape Town Tel.: +27 21 951 8088

Johannesburg Tel.: +27 79 509 9970

Fax: +27 21 951 8033

E-mail: enquiries@targetcranes.co.za

24 hours a day
7 days a week



Some of us shudder with the approach of another birthday, for some it's an opportunity to reflect and others to set new goals for the journey forward. In the words of Jean Paul Richter, "Our birthdays are feathers in the broad wing of time," and these milestones should be enjoyed and shared with those around you. For this reason we will include a monthly tribute to all staff celebrating their birthdays in the Target Family.

To everyone who have had birthdays in the passed four months and those coming up in May, be inspired by these words:

*"Count your life by smiles, not tears,
Count your age by friends, not
years."* (www.squidoo.com)

BIRTHDAYS PASSED

January

1st Khayalethu Mpelane (Operator)
8th Hamilton Mamfengu (Op. Assist.)
11th Aubrey Fortuin (Operator)
15th Tashwin Meiring (Op. Assist.)
20th Machiel Steenkamp (H&S Officer)
24th Lucky Ndinisa (Operator)

February

2nd Johan de Lange (Operator)
3rd Ricardo Miller (Operator)
Steven Hendricks (Operator)
14th M. Manshoer Armiem (Operator)
15th Jacky Smith (Operator)
17th Amanda Fourie (Workshop Sec)
22nd Carl Grunder (Operator)

March

1st Richard Holtzhausen (Operator)
3rd Bernard Koopman (Operator)
Wilson Ngxalambiso
8th Eugene Senekal (Mechanic)
11th Conway Hendricks (Op. Assist.)
11th Wayne Hendricks (Driver)
12th Adam Jansen (Workshop Ass.)
21st Riaan Geldenhys (Ops. Manager C.T.)
22nd Desmond Wall (Workshop Man.)
23rd Patrick Wall (Operator)
31st Arnold Cupido

Birthday Round-Up

April

3rd Gavilan Smith (Trainee Op.)
4th Ivan Baron (Operator)
5th Gadija Davidson (Debtors)
6th Nicole Malumba (Tea lady & cleaner)
8th David Terry (Panelbeater)
16th Jeannette Esterhuizen (Creditors)
Luncedo Ndabambi (Operator)
18th Je'Taime Crous (Sales Rep.)
20th Mzwabathu Bhiyana (Op. Assist)
23rd Graham Cupido
25th Bhekumuzi Mthethwa (Driver Jhb)
26th Dira Makhanya (Operator)
29th Dumela Mwafulirwa (Workshop Ass.)
Hendrick Rheeders (Operator)

MAY BIRTHDAYS

3rd Natasha Holtzhausen (Admin Man. Jhb)
4th Gert Basson (Site Supervisor)
11th Johnson Nkosi (Operator)
15th Khaye Mamfengu (Operator)
20th Taku Sebastin Asung (Trainee Op.)
21st John Lake (Operator)
22nd Phillipus Philander (Workshop Ass.)
25th Maxwell Luvuno (Operator)
29th Linda Janse van Rensburg (Debtors)

Weddings

Wayne Meyer and Seraline Hendricks tied the knot on 15 March 2008 in the Old Apostolic Church in Elsenverg.



Congratulations from us all:
"Let your love endure beyond the last sunset." (<http://weddings.about.com>)

Romano Abrahams signs as witness on Wayne and Seraline's special day.

New Arrivals



Amanda Fourie, our workshop secretary gave birth to a bonny baby girl on 19 March 2008. May Tara-Lee bring you much joy!

*"Ten tiny little fingers that always want to play,
That never stop exploring the wonder of today.
Ten tiny little fingers that from the very start,
Will reach out for tomorrow, yet always hold
your heart."* (www.simplysentiments.com)



Proud dad, Ryan Wall feeds their little bundle of joy