



“PRIDE” FOR TARGET CRANES

Headquartered in Houston, Texas, Pride International, Inc. is one of the world's largest drilling contractors. Pride provides contract drilling and related services to oil and gas companies worldwide. With approximately 4,000 employees, Pride offers a multinational workforce with offices in the United States, Angola, Brazil, India, Mexico and Saudi Arabia.

Pride South Pacific arrived at Cape Town Harbour on Wednesday, 16th September 2009. The contract was awarded to Target Cranes for the supply of LG 1550 (Day & Night Shift), 2 x Rigging Crews (Day & Night Shift) and 77 Ton (Day Shift). The LG 1550 was required for lifting the newly built Accommodation Modules onto the rig (Radius 60-meters, 35 m High, lifting 31 Tons).

We also replaced the existing B O P's (Engines) with new ones (Radius 74 meters, 35 m High, lifting 35 Tons) and the removal of the Crown Block (Radius 77 m, 109 m High, lifting 18 Tons).

A special thank you to the following staff for their commitment and hard work during the project to make it a success. Wayne Cook, Patrick Wall (LG1550), Taku Sebastin Asong (77 Ton), John Morris, Deremy Bernard Jordaan, John January (Rigging Crew Day Shift), Edwin Januarie, Sebastian Muller and Anthony Alexander Van Wyk (Rigging Crew Night Shift).

H:\Pride International, Inc_ - Company Overview.htm



SASOL I



Left: The 180 ton Liebherr LTM 1160 is in process of demolishing one of the most famous Vessels "THE WHISKY BOTTLE".

This Vessel derived its name from the shape of a Whisky bottle. On the left you can see the crane is holding the dome of the Vessel that weighs 14 ton.

There will be a series of 5 lifts before this Vessels is completely demolished. Once the Vessel has been demolished, the open space will be utilised to extend the plant.

Alphan Manaswe (Operator) is well capable of handling the job, the project started on 12th October 2009 and will be completed on 9th November 2009.



ESKOM PEAKING GENERATIONS

Target Cranes assisted Eskom Peaking Generation in the maintenance and refurbishment on wind mills at Wind Farm in Klipheuwel.

The process involved a mancage for which an exemption certificate had to be obtained from the department of Labour.

This was the client's specific safety requirement, due to Eskom employees working at a height of 60 m in adverse weather conditions. For safe execution of the task, a 140 Ton Mobile Crane with wind speed meter was utilized for a period of 3 days. The client commended Target Cranes on the overall services provided.

SAFE TECHNIQUES

Lifting and Handling Objects

- 1st Assess the load – can you lift it safely?
- 2nd Place your feet at ten-to-two
- 3rd Bend you knees
- 4th Back - KEEP IT STRAIGHT & UPRIGHT
- 5th Neck & head – keep your chin up.
- 6th Load - hold it in close to your pelvis.

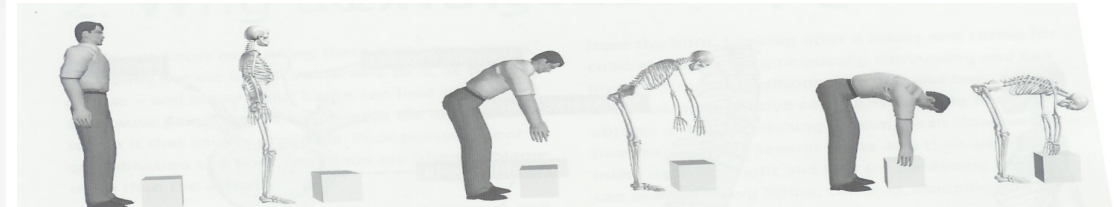
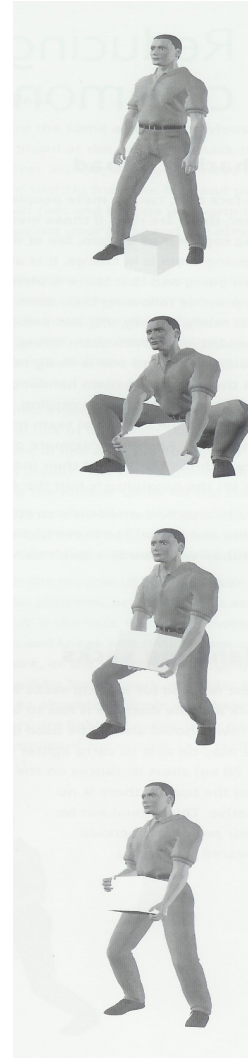
Remember – use these good principles for lifting in different situations and don't stick blindly to" it was done like this for years principle"

Points to remember

Practicing good lifting technique does not enable you to lift more than you could before. It means that, whatever your individual capabilities, your chances of injury are reduced.

Good technique is just one of a number of control measures, within the hierarchy of control, that the employer has to put in place to reduce manual handling risks; it is not an easy solution but should become a way of life.

This is about a cultural change, about not accepting practices because that's the way they've always been done.



Taking wine to new heights

On 29/10/2009, Target Cranes transported a Cooling Tower and Casing to Badsberg Wine Cellars in Rawsonville. The unit had to be hoisted and rigged onto its final position on the roof of the Cellar.

The job was a huge success and very impressive that Mr. Conrad Brink sent an e-mail to Michael Wall to commend Target Cranes on a job well done.

His e-mail reads as follows:

"3 of the Directors was on site yesterday. They were all super impressed that you as an

OWNER of Target cranes was on site PERSONALLY. They were very impressed with your and Target Cranes professionalism and the neatness of your cranes and vehicles.

Bottom line, you were there as an owner and did the job yourself, which is currently the talk of the "town", I received the feedback.

BTW - Badsberg took ALL the wine prizes in RSA - the biggest anyway, those that counts. Other Cellars listen to them.

I sincerely hope that this one job will open the world in the industry again without being dependent on tank manufacturers"

Thanks again Michael

Regards Conrad Brink



Director, Michael Wall with the Badsberg Team from left: KK Mafengu; Solly Makwekwe; Abduragmaan Bowers; Lucendo Ndabamba

Bottom: Simon Molebatsi and Jacobus Klaasen



“Emerald Star” for little angels

Target Cranes has sponsored this pony to the Durbanville's Children's Home with behavioural problems (Chilli House).

Her name is Emerald Star (AKA Emmy) and was a gift from Director Gail Canovi early this year.

Target supplied all the equipment and is assisting with the monthly maintenance, food for her.

SURPRISE.....SURPRISE.....

With junior due for arrival late November 2009, Gadija Nakidien was surprised with a baby shower on 2 October 2009, compliments of Target Cranes management and staff.



Not knowing what to expect, for every wrong guess of who the gift came from, she had to either taste or drink (baby foods and Juice) or pull an item of clothing out of a box, which she then had to wear (from an adult diaper to morning slippers).



Top: Gadija, looking very confused, but is suppose to blow up a balloon, fold it into a toweling diaper and pin it without bursting the balloon.

Bottom: Director, Gail Canovi, assisting Gadija to pin the baby soother onto the bib

October-National Breast Cancer Awareness Month



As the month of October brings breast cancer into focus, it's time to increase public understanding of the disease, including its prevalence, approaches to screening and prevention, treatment options, and resources that offer updated breast cancer information throughout the year.

After skin cancer, breast cancer is the most frequently diagnosed cancer in women.

According to the ACS, breast cancer, which is the second cause of cancer death in woman (after lung cancer), will be responsible for 40,610 deaths in 2009. It's important to note, however, that breast cancer mortality rates have been declining since 1990 and that progress in both early detection and treatment are largely credited for this reduction.

<http://www.cancerconsultants.com/october-national-breast-cancer-awareness-month/>



Who's the new people??

Shola Ashburner Sales Representative 01/10/2009
Ciara Van Delft Sales Representative / Market Researcher 01/10/2009

Births



Happy birthday to you !!!

In our October 2009 issue, we published Natasha Holtzhausen's surprise stalk party. In this issue we congratulate Natasha and Richard on the birth of their son William Holtzhausen who made his debut on Saturday 31 October 2009 @ 7:20 am and weighing 2.98kg.



*We are so happy your new baby is here.
We send you blessings, love and lots of cheer!*

- 2nd Vincent Jacobs
- 3rd Wayne Cook
- 6th Shadrac Moila
- 10th April Kumalo
- Kevin Martin
- 11th Neil January
- Simphiwe Cetywayo
- 13th Christopher Ooshuizen
- 16th Craig Neilson
- Ricardo Botha
- 17th Antonio Soares
- 19th Trevor Arendse
- Stanley Lakhoaba
- 23rd Edward T Molefe
- 25th Moses Mokoena
- 29th Shola Ashburner
- 30th Cherise Fourie
- Siphila Madikizela



Congratulations to Fracios Julies and partner on the birth of their daughter Mica Lee Julies.

Mica was born on 29 October 2009 weighing 3.5kg

Urgent Appeal !!!!

Foetal Alcohol Syndrome, Cerebral Palsy, intellectual disability, Down Syndrome, deafness, blindness and epilepsy are only but some of the disadvantaged children being cared for in homes.



Directors would once again like to appeal to all staff to make any form of contribution to assist Homes in caring for these children, as the subsidies these homes are receiving falls far short of the actual cost of caring for these kids.

Boxes with needs list of each organization has been placed at our Cape Town reception office for all your contributions.

Contact Unitta Howley for more information, she would gladly be of assistance.

If every man helps his neighbour, then who would need help ?????



24 hours a day
7 days week

Cape Town Office
1 Van Eck Street
Bellville South
7530

P.O. Box 674
Sanlamhof
7532

Tel: +27 21 951 8088
Fax: +27 21 951 8033

Johannesburg Office
264 Murray Road
Wadeville
1428

P.O. Box 123802
Alrode
1451

Tel: +27 11 827 9227
Fax: +27 11 827 9688

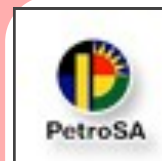
National Tel: 0861 535 535
E-mail: enquiries@targetcranes.co.za
Editors: Linda Janse van Rensburg & Gadija Parker



ON TARGET

Volume 1, issue 4

November 2009



PETROSA SHUTDOWN 2009



Special points of interest:

- Shutdown of PetroSA
- "Pride" for Target Cranes
- Sasol I
- Eskom Peaking Generations

Target Cranes established their first crane, TC 14, a 38 tonner on site for the Shutdown on 22 September 2009. During the course of the first week, the balance of the cranes were mobilized and by Monday 28 September 2009, we had 46 cranes ranging from a 25 tonner to 120 tonner on site, as well as 46 riggers and rigger assistants. The 650 tonner was the last crane to be mobilized and that occurred on the 3 October 2009 at the harbour.

The main scope of work during the shut was cleaning, servicing, refurbishing and replacing of valves and bundles. The heaviest bundle to be retracted and replaced, using a 80 tonner and 120 tonner, was 33 tons including the bundle puller/pusher.

With the change of work scope on site, the nightshifts increased from 1 x 50 ton crane to 1 x 25 ton, 1 x 30 ton, 2 x 50 ton, 3 x 80 ton and 1 x 95 ton cranes. We also received an order for a 6 Axle Doll trailer to transport a 29.8 m long, 23 ton feed depropaniser, to load this vessel onto the lowbed, PetroSA's 450 ton crawler was used with our 50 tonner to tail.

The 650 tonner was on site for a total of 23 days, whereby it was only required for two lifts. These two lifts were, however, the heaviest lifts for the duration of the shutdown. It removed the buoy weighing 112 tons when it came out of the water, and once refurbished, replaced it into the water weighing 95 tons.



Above: Mossel Bay Harbour as seen from a Guesthouse on the hill side, above the famous Santos Beach.

The quick thinking of Ian Baron saved the day when a welder fainted due to fatigue and smoke inhalation from welding the whole day without a break. The fly jib was fitted onto an 80 tonner and the gentleman was hoisted down in a basket from a 30 m height.

Safety on site was paramount and every precaution was taken to eliminate injuries. (Should an accident have occurred PetroSA was very strict with regards to procedures and response time.) A special thanks goes out to Gert Basson for all of his hard work and a job well done.

What initially started off as a challenging project, ended off as tremendous learning experience for all that were involved. Excellent relationships were formed between PetroSA, the two main EMC's, namely Kentz and Grinaker-LTA, and ourselves.

Without the hard work and dedication put in by all, the shutdown would not have been the tremendous success that it was, so a special thanks and congratulations to all that were involved.

Unfortunately, no pictures for this job will be published, as no cameras were allowed on site.

Management / Supervisor Team:

Michael Hawkins, Tamsin Conradie, Gert Basson, Gerrit Joubert, Riaan Geldenhuys, Ian Baron and Rudi Vogel

Linda Nieuwoudt - Admin Clerk,
Andries Bezuidenhout - Mechanic,
Franscois Tantrum - Mechanic,
Sam Goeieman - Driver,
Paul Goeieman - Driver.



To many to name, but still greatly appreciated.

Inside this issue:

Safe Techniques 3

Emerald Star

Baby Shower 4

Birthdays

Births

Urgent Appeal

Who's the new people